



NoLimit

SUPERLITE SL100i SL300i SL500i

INSTRUCTION MANUAL





INDEX

1. Most Important points to read prior to using
2. Charging and care of the Battery
3. Fitting the Battery
4. Attaching/Removing Wheels
5. Folding/Unfolding the Buggy
6. SL100i / SL300i – Free Wheeling Gear System
7. SL500i – The Differential Gear System
8. Fitting your Golf Bag
9. Positioning the Seat
10. Assembling the Umbrella Holder
11. Sand Bucket Loop
12. Engaging the 4th Wheel
13. The Front Wheel and Suspension System
14. Top Handle Control Box – Features
15. Maintaining your Buggy
16. Product Warranty
17. Repair work during Warranty Period
18. Warranty Exclusions
19. Electronics Warranty
20. Wheel Warranty
21. Battery Warranty
22. Charger Warranty
23. Fair Wear and Tear
24. Transport
25. Frequently Asked Questions



MGI SUPERLITE SL100i, SL300i and SL500i

Congratulations on the purchase of your MGI motorised buggy. MGI is the world leader in motorised golf buggy technology and we welcome you as one of our customers. To ensure you enjoy trouble free operation throughout the life of the buggy, it is important that you adhere to the instructions for use and care, particularly the battery and the charger.

1. Most Important points to read prior to using

- a. Charge the battery (see page 3)
- b. Assemble the buggy placing the rear wheels on their correct side (see page 4)

2. Charging and care of the battery

- a. Prior to the **first** and after **every** use charge the Battery. The battery and charger comes with an easy connection system. Red to Red and Black to Black.
Important: - The battery must be charged at least over night before its first use.



- b. Your battery is designed for 18 holes only. If you play more than 18 holes before recharging, the battery's life could be compromised.
- c. Always recharge the battery as soon as possible after use, no matter how short the period of use.
- d. During play, minimise the drain on the battery by avoiding taking your buggy into the rough whenever possible.
- e. Avoid as much as possible using the buggy to pull you up the hills.
- f. In between use, always leave the charger connected to the battery with power on.
- g. If you are not playing golf for sometime, you may disconnect the battery once it is charged. The battery will need recharging at least every 3 months and must be recharged prior to use. The battery should be stored in a dry and dark environment
- h. The battery is a sealed battery. If you are intending to take your buggy and battery on air travel, we advise that you make contact with your airline prior to travel.



3. Fitting the battery

Once charged, the battery can be fitted to the buggy. The battery comes with a battery cover, carry handle and battery leads.

- a. Place your battery in the tray with the leads facing to the front of the buggy.
- b. The battery tray has a battery securing strap.
- c. The securing strap is to be used at all times as it protects your battery against damage from falling out.
- d. The battery lead can now be connected to the battery tray. Connect red to red and black to black.



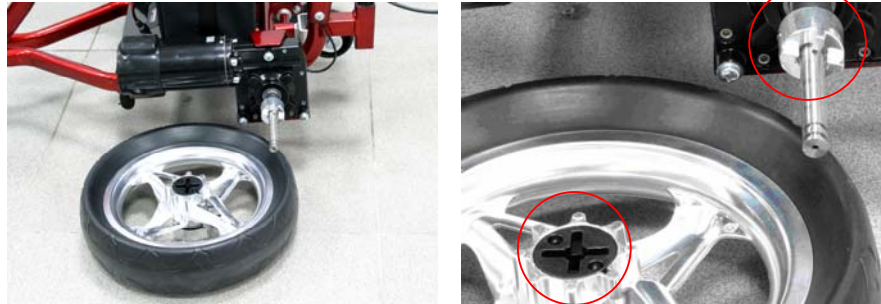
Fail Safe Connection:

Your buggy has been equipped with fail safe battery connection. Your buggy will only start once you increase the speed control.



4. Attaching / Removing Wheels

If your buggy comes with the wheels off, they should be placed in position prior to unfolding. You will need to put the wheels on the correct sides. The wheels are marked 'L' and 'R' on the inside of the hub. The left and right of the buggy is determined by looking from the rear of the buggy. You will need to align the four slots on the inside of the wheel with the same four on the drive dog on the axle. To engage the rear wheel, depress the quick release catch until the wheel is in place.



Align the four slots on the wheel with those on the drive dog teeth



Depress the quick release catch, whilst putting wheel in position on the axle

Your MGI motorised buggy uses a gear system, whereby the two rear drive wheels do not free wheel. The motor needs to be running for the buggy to move. Drive will only occur when the speed control is turned on.

If for some reason your buggy stops operating during your golf round, your buggy can free wheel. Simply depress the quick release tag and at the same time move the wheel outwards about 10mm from its current position. Release the tag and allow the wheel to click into its outer position. By doing this, you have disconnected the wheels from the drive and they can rotate freely.



5. Folding/unfolding your buggy

Practice unfolding and folding the buggy using the steps below. This means when you go to play golf you will be somewhat familiar with this task.

1. Press the button on the lower folding mechanism and fold the lower handle
2. Press the button on the upper folding mechanism and fold the upper handle
3. Collapse the handle until both folding mechanisms lock into place
4. Bend your knees and lift the buggy using the front lifting handle and centre handle piece
5. You can also obtain a carrying handle. You may find lifting, the SLi series of buggies, easier using this handle (see below).



Step 1



Step 2



Step 3



Step 4



Lifting Handle (Accessory)

The following order of steps is suggested when folding your buggy down:

- a. Seat and stem off first
- b. Golf bag off second
- c. Battery off and directly into the boot of the car. This will save double handling
- d. Sand bucket and loop off
- e. Disengage 4th wheel (Optional on SL100i and SL300i)
- f. Remove antenna
- g. Fold down buggy and place into the boot of the car



6. SL100i and SL300i – Free Wheeling Gear System

The Superlite SL100i and SL300i use a free wheeling gear system. This means that drive will only occur when the speed control is turned on. Also as a free wheeling buggy, it is important that when the buggy is stopped, the buggy is positioned so that it cannot roll forward. Both the SL100i and SL300i will not easily roll backwards.

7. SL500i Only: The Differential Gear System

Your MGI Superlite SL500i motorised buggy uses a differential gear system, whereby the rear drive wheels do not free wheel. The motor needs to be running for the buggy to move. Drive will only occur when the speed control is turned on.

If for some reason your buggy stops operating, your buggy can free wheel. Simply depress the quick release tag and at the same time move the wheel outwards about 10mm from its current position. Release the tag and allow the wheel to click into its outer position. By doing this, you have disconnected the wheels from the drive and they can rotate freely.

8. Fitting your Golf Bag

- a. Separate the Velcro straps located on the top and bottom bag supports.
- b. Expand the straps to be enough to fit around the golf bag.
- c. Place your golf bag on the buggy
- d. Bring both straps together by overlapping the Velcro
- e. Pull the straps tight





9. Positioning the Seat (Accessory SL100i)

Place the seat stem into its position in the seat stem bracket on the right hand side of the buggy.

MOST IMPORTANT: DEPRESS THE SEAT WITH YOUR HAND BEFORE SITTING. DO NOT USE THE SEAT ON UNEVEN SURFACES.

Please note MGI does not warrant any set support brackets that are damaged or bent.



10. Assembling the Umbrella Holder (Accessory SL100i)



Your buggy comes with an umbrella holder. The umbrella holder needs to be bolted into position. Simply follow the pictures above. When not in use the umbrella holder can be turned to its side. If you take your buggy home in your car, you may need to do that prior to folding the buggy down. Your umbrella holder can be adjusted both to the side and backwards and forwards.

The umbrella is secured inside the umbrella holder by tightening the plastic bolt located near the top of the holder.

DO NOT LEAVE YOUR UMBRELLA UP IN THE UMBRELLA HOLDER IN WINDY CONDITIONS.

If the wind catches the umbrella, it could cause your buggy to tip over and cause damage, which will not be covered by warranty.



11. Sand Bucket Loop (Accessory SL100i)

If your buggy comes with a sand bucket loop, place this in position at the rear of the buggy.



12. Engaging the 4th Wheel (Accessory SL100i and SL300i)

Important: To avoid damage to your buggy always engage the 4th wheel prior to playing golf, regardless of the terrain you are playing on.

To engage the 4th wheel, pull on the spring loaded locking pin, begin to slide the 4th wheel back release the locking pin and continue sliding the 4th wheel back until the locking pin locates itself into position.





13. The Front Wheel and Suspension System:

Your buggy has a unique front wheel system. The front wheel can swivel 360 degrees. The front wheel assembly can be either locked or unlocked. The main advantage of having the assembly unlocked allows your buggy to be highly manoeuvrable. You only need to turn the buggy handle and your buggy will turn. The suspension helps reduce the amount of shock the buggy will take when going over hills, bumps, ruts, etc...

If you decide to lock the front wheel, ensure the front wheel is behind the buggy and protected by the bumper and carrying handle at the front of your buggy. In a locked situation your buggy will go straight and will not wander as it can if left to motor by itself with the front wheel in an unlocked position.

To lock or unlock simply lift or release the latch as depicted in the photos below.



1. Press down the latch to unlock
360



Release to lock the front wheel

2. When unlocked the front wheel can rotate
degrees



3. When locked the front wheel sits behind the front wheel



14. Top Handle Control Box Features

When you connect your battery to your buggy lights will come on. These lights are designed to stay on whilst connected to the battery.

- a. Start/Stop light. When the buggy is stopped the light will be red. When the buggy is moving forward the light will be green.
- b. Battery Status. When the battery is charged the light is green. If the battery status becomes red, you will only have a few holes to go and it will stop.
- c. ECDF light. The light is a solid red. When the ECDF is activated the light will flash.
[For SUPERLITE SL500i MODEL ONLY]

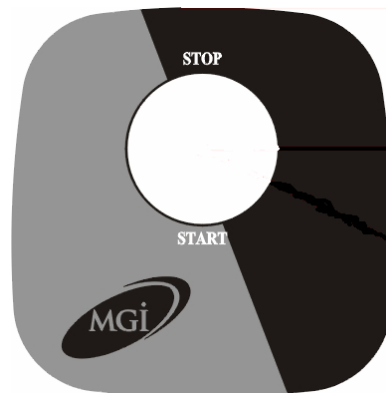
Your SL300i or SL500i buggy has been equipped with fail safe battery connection. If your control knob has been accidentally turned on prior to the battery being connected it will not take off. The speed control knob needs to be in its off position prior to you wanting the buggy to motor forward.

For all models the off position is achieved by turning the control knob fully in an anti-clockwise direction. You will hear a click as it turns fully off.

By rotating the speed switch slowly forward, the buggy will move forward. Rotate clockwise until the desired speed is obtained.

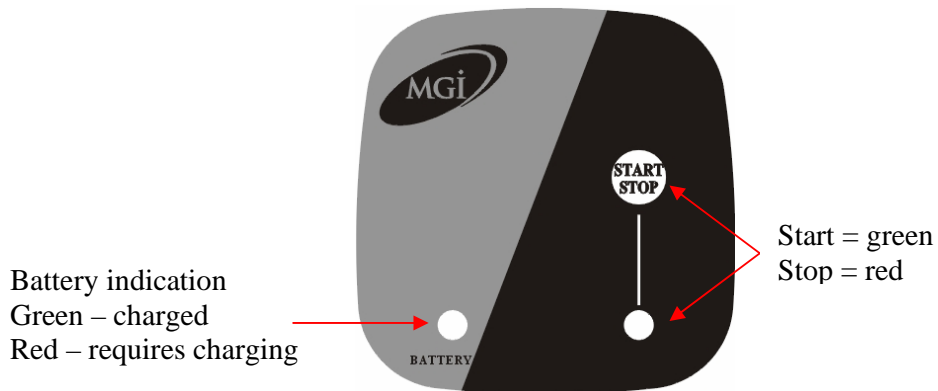
To turn the buggy off, either the start/stop button can be used or the rotating switch can be turned anti-clockwise until the buggy stops [you will hear the switch click off]

TOP CONTROL BOX FOR MGI SUPERLITE SL100i

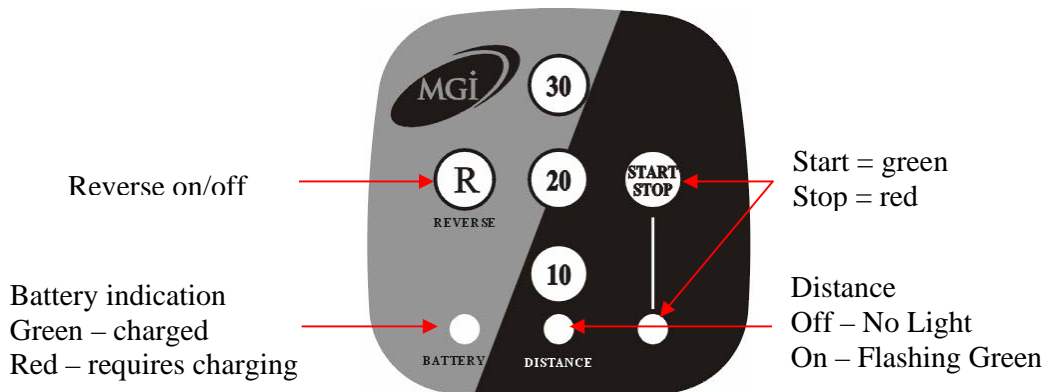




TOP CONTROL BOX FOR MGI SUPERLITE SL300i



TOP CONTROL BOX FOR MGI SUPER LITE SL500i



Superlite SL500i Only

ECDF – Electronic Controlled Distance Function

ECDF allows you to send your buggy three preset distances. They are 10, 20 and 30 metres.

How to Operate the ECDF:

1. Aim your buggy in the direction of where you would like to send it
2. Determine the distance you would like to send it. Choose 10, 20 or 30 metres. If you are unsure, choose the least distance.
3. Press the distance button: 10, 20 or 30.
4. Turn the buggy speed on to the relevant speed and let the buggy move forward. The buggy will stop once the selected distance has been reached.
5. You can select a distance at any time whilst the buggy is both stopped and moving.
6. You can cancel the distance control function at any time by turning the buggy off.

Please Note: Before you operate the ECDF function ensure the rear 4th wheel is in position.



The MGI Superlite SL500i comes with three LCD lights. Whilst the battery is connected each of the three lights will be displayed. These lights take minimal energy to remain lit.

Electronic Cruise Control on the MGI Superlite SL500i

The electronic cruise control is permanently on and provides automatic braking down hills and gives you total control over your buggy without having to hold on.

15. Maintaining Your MGI Motorised Buggy:

a. Buggy.

To give you years of good operation, your buggy requires some care and attention. Your buggy has a number of nuts and bolts. Each month they should be checked and tightened when necessary. Do not over tighten, but tighten just enough in order that everything is firm. To keep your buggy clean use warm water with a mild detergent. Do not hose down your buggy under any circumstance, as your buggy has electronic components.

b. Wheels.

The rear wheel axles need to be lubricated. Use Petroleum Jelly or light grease. Use a very small amount as the grease can attract sand. If you do play in very sandy conditions you should clean your axle and regrease fortnightly.

Remove the rear wheels by depressing the spring clip and at the same time pull off the wheel. You will need to align the wheel's four sided slot to its equivalent on the buggy to ensure the wheels are properly engaged. Ensure that the wheels are put on the correct side 'L' and 'R'.

c. Battery.

Your battery will charge best, laying flat, in a warm and air flowing location. In winter, it is best charged off any concrete floor. Be very careful not to drop your battery. The battery casing is easily cracked and the battery's subsequent life will be severely compromised.

16. Product Warranty:

New Product Warranty

The Warranty is given by Protégé Sport Pty. Ltd. trading as Motorised Golf International, ABN 59 006 140 101 (MGI). The Warranty applies to the Buggy identified by the serial no. It is provided to the original and subsequent owners using the Buggy within the country of purchase during the Warranty Period.



Warranty Period

The coverage commences from the date of purchase from the retailer (or in the case of a demo Buggy the date when the buggy was sold to the retailer). For SL300i and SL500i buggies the coverage expires at the end of the **24 month Warranty Period** from the date of purchase on the golf Buggy (comprising frame, motor and gearbox) and a **12 month Warranty Period** from the date of purchase on the electronics, wheels, battery and battery charger.

The SL100i buggy has a **12month Warranty Period** from the date of purchase on all parts.

17. Repair work during warranty period

Warranty work undertaken (including parts and labour) will be carried out at no cost to the Buggy owner. However, this work should not be confused with servicing for which a charge is payable. The owner is responsible for getting the buggy to a repair centre.

18. Warranty Exclusions

a. Damage

Your Warranty does not extend to the following damage:

- Damage caused by an accident, misuse, neglect, fire, theft or moving objects striking the Buggy
- Damage caused by chemicals or sealants
- Damage caused by flood, hail, salt, etc
- Damage caused to batteries by over discharging or sulphation due to leaving in a discharged state for prolonged periods.
- Damage caused by overheating due to inadequate ventilation during charging
- Indirect, incidental or consequential damages
- Bent seat support bracket on buggy frame

b. Misuse

This Warranty does not cover damage caused by:

- Misuse or abuse of the Buggy
- Operation of the Buggy after the defect is known
- Failure to carry out proper maintenance services (refer to owner's manual)
- Alteration of the Buggy by anyone not authorised by MGI
- Fitting of parts or accessories not recommended by MGI
- Any work carried out on the Buggy by anyone except an authorised MGI retailer or authorised Service Centre

19. Electronics Warranty

The electronics are warranted for 12 months from the date of purchase

20. Wheel Warranty

Wheels are warranted for 12 months from the date of purchase



21. Battery Warranty

Batteries are warranted for 12 months from the date of purchase. If the battery fails during the warranty period and is replaced, the warranty is from the date of purchase of the first battery and continues for a total of 12 months.

22. Charger Warranty

The charger is warranted for 12 months from the date of purchase.

23. Fair wear and tear

Items such as the variable speed controller potentiometer and wheels which are subject to wear and tear will only be covered for fair wear and tear

24. Transport

MGI accepts responsibility for any buggy only after arrival at its premises.



25. Frequently Asked Questions and Answers:

Question: Is it important to register my purchase for warranty purposes?
Answer: You should register your purchase as soon as possible with MGI. You can register on line or through the mail. The serial number for your cart is located underneath the top handle control box.

Question: How often should my battery be charged?
Answer: Your battery should be left on charge in between use. You should put your used battery back on charge as soon as possible. Leaving your battery in a discharged state will shorten its life.

Question: Should I discharge my battery fully to get rid of memory?
Answer: NO – Gel batteries do not have memory problems. Fully discharging the battery will damage it and the charger will not be able to recharge the battery.

Question: Does my buggy need regular maintenance?
Answer: If you are using your buggy at least twice a week, it should be serviced at least on an annual basis. This is preventative maintenance and will require on average one hours chargeable labour.

Question: How much can I expect to pay for a service?
Answer: The normal cost of a service is \$75 plus parts if required.

Question: What can I do to help maintain my buggy?
Answer: Keep it clean using warm water with a mild detergent. Do not use a hose under any circumstances. Your buggy has many electronic components.

Question: Do the rear wheels require greasing?
Answer: The rear wheel axles on which the rear wheels go should be kept greased. Only use a minimal amount of grease as the grease will attract sand etc. Petroleum jelly or some other light grease can be used.

Question: Where can I take my buggy to be serviced?
Answer: There are 80 service centres across Australia - please check out our website www.mgikaddy.com for an up to date listing or contact us on 03 9873 4433 or 1300 644 523.
In Melbourne you can also bring your buggy to our main service centre at head office at 11 Maurice Court Nunawading.
In the Melbourne & Sydney areas, there is a mobile service van that attends most golf courses and retailers.

MGI invests large amounts of capital into advancing the mechanical and electronic features of its range of buggies. Should you have any positive feedback or suggestion, which would further enhance the performance of our buggies, we would welcome your correspondence.

If you have any concerns relating to the use of your Navigator do not hesitate to call us at 1300 644 523. Thank you for your assistance and continued support.

Most importantly could you please provide us with your email address for further technical updates to be sent to you. Please email MGI on sales@mgikaddy.com



Warranty Registration Form:

As part of your warranty this form must be returned to MGI at:
11 Maurice Court, Nunawading, Victoria 3133 within 14 days from date of purchase.

Or

You can register your buggy purchase on line at www.mgikaddy.com

Owners Name:

SurnameFirst Name

Date of Birth Gender [m/f]

Owner's Details:

Number and Street.....

Town/CityState Postcode.....

Contact Number [home].....[mobile]

Email Address

Buggy Details:

Model Purchased.....Serial Number.....

Date of Purchase

Retailer Details:

From whom did you purchase your MGI buggy?

Retailers address

Golf Club Details:

Do you belong to a golf club? [Y/N]

Which Club?

Name of golf Professional

How often do you play golf?.....

Are you the only person using your new Golf Buggy [Y/N]